

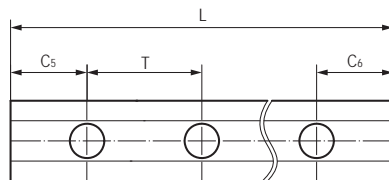
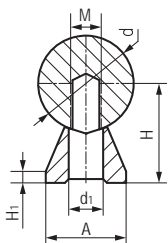
## 微型窄支撑轴 Small supported shafts



### 产品特性 Product features

- 窄矮型设计铝支撑
- 交货范围不包括安装螺丝
- 可用轴材料：AS精密铝轴，CS精密硬铬钢轴，ES精密304不锈钢轴
- 轴和支撑件未组装
- 最大许可长度2000mm
- Completely supported with aluminum low support
- Scope of delivery doesn't include mounting screws
- Available shaft materials: Aluminum, hard anodized C45, hard-chromed Stainless steel (304), hardened
- Shafts and supports are supplied unassembled
- The max. length of supports: 2000 mm

### 标准规格 Standard specifications



产品编码 Part No.:

ASS01-12-0000

- 长度 Length
- 直径 Diameter
- 支撑类型 Type: S01
- 装配轴 Shaft: AS CS ES

产品编码 Part No.	装配轴 Shaft	d [mm]	d <sub>1</sub> [mm]	H [mm]	H <sub>1</sub> [mm]	M [mm]	A [mm]	T [mm]	C <sub>5</sub> =C <sub>6</sub> [mm]		L max. [mm]	重量 Weight [kg/m]
									min.	max.		
ASS01-12-0000	AS-12	12	4.5	14.5	3	M4	11	75	20	57	2000	0.53
ASS01-16-0000	AS-16	16	5.5	18	3	M5	14	75	20	57	2000	0.87
ASS01-20-0000	AS-20	20	6.6	22	3	M6	17	75	20	57	2000	1.32
ASS01-25-0000	AS-25	25	9	26	3	M8	21	75	20	57	2000	1.98
ASS01-30-0000	AS-30	30	11	30	3	M10	23	100	20	69.5	2000	2.24

产品编码 Part No.	装配轴 Shaft	d [mm]	d <sub>1</sub> [mm]	H [mm]	H <sub>1</sub> [mm]	M [mm]	A [mm]	T [mm]	C <sub>5</sub> =C <sub>6</sub> [mm]		L max. [mm]	重量 Weight [kg/m]
									min.	max.		
CSS01-12-0000	CS-12	12	4.5	14.5	3	M4	11	75	20	57	2000	1.1
CSS01-16-0000	CS-16	16	5.5	18	3	M5	14	75	20	57	2000	1.9
CSS01-20-0000	CS-20	20	6.6	22	3	M6	17	75	20	57	2000	2.91
CSS01-25-0000	CS-25	25	9	26	3	M8	21	75	20	57	2000	4.46
CSS01-30-0000	CS-30	30	11	30	3	M10	23	100	20	69.5	2000	6.31

产品编码 Part No.	装配轴 Shaft	d [mm]	d <sub>1</sub> [mm]	H [mm]	H <sub>1</sub> [mm]	M [mm]	A [mm]	T [mm]	C <sub>5</sub> =C <sub>6</sub> [mm]		L max. [mm]	重量 Weight [kg/m]
									min.	max.		
ESS01-12-0000	ES-12	12	4.5	14.5	3	M4	11	75	20	57	2000	1.1
ESS01-16-0000	ES-16	16	5.5	18	3	M5	14	75	20	57	2000	1.9
ESS01-20-0000	ES-20	20	6.6	22	3	M6	17	75	20	57	2000	2.91
ESS01-25-0000	ES-25	25	9	26	3	M8	21	75	20	57	2000	4.46
ESS01-30-0000	ES-30	30	11	30	3	M10	23	100	20	69.5	2000	6.31